

2019-20 Budget Profile



Unified School District 234 Fort Scott



School Finance
Kansas State Department of Education
Landon State Office Building
900 SW Jackson Street, Suite 356
Topeka, Kansas 66612-1212

www.ksde.org

Order of Contents

- Budget General Information (characteristics of district)
- Supplemental Information for Tables in *Summary of Expenditures*
- KSDE Website Information Available
- Summary of Expenditures (Sumexpen.xlsx)

2019-20 Budget General Information

USD #: 234

Introduction

The staff members of USD 234 are committed to preparing our students for their future through quality, effective, and caring teaching so that they are prepared with the skills, knowledge and experience for college and career success.

Our community is comprised of just over 8,000 people who are actively engaged in various organizations and governmental entities partnering to build a better Bourbon County. The various organizations involved are the City of Fort Scott, Bourbon County, the Fort Scott Chamber of Commerce and its member businesses, Fort Scott Community College, various citizen groups and Unified School District 234.

As assessed valuations in Fort Scott rose slightly this year, economic development continues to be a primary focus for the Chamber of Commerce, the County and the City of Fort Scott. Economic development goes hand in hand with the quality of education available to the citizens of Fort Scott.

The school district is comprised of five school sites:

Fort Scott Preschool - 58 students

Winfield Scott Elementary School (grades K-2) - 412 students

Eugene Ware Elementary School (grades 3-5) - 427 students

Fort Scott Middle School (grades 6-8) - 433 students

Fort Scott High School (grades 9-12) - 573 students

Total Current Enrollment (August) - 1,903

Enrollment History:

<u>Year</u>	<u>Total Headcount</u>
2011	1,946
2012	1,888
2013	1,866
2014	1,901
2015	1,896
2016	1,904
2017	1,891
2018	1,903
2019	1,901

Administration - 15

Certified staff - 164

Classified or support staff - 179

Our mission at USD 234 is to lead in the success of each student in becoming independent, responsible, and productive global citizens. USD 234 supports the Kansas State Board of Education in their outcomes of Kindergarten Readiness, High School Graduation Rate, Post-secondary Success, Individual Plans of Study, and Social and Emotional Learning. To accomplish our mission and to address the KSBOE Outcomes, USD 234 has identified two Areas of Focus to address through accreditation;

1. Family Engagement
2. Technology Implementation

The USD 234 School Board has also identified four Areas of Focus in its strategic plan to meet the needs of its students:

1. Curriculum, Instruction, and Assessment
 - a. USD 234 will have a fully aligned PreK - 12 curriculum that includes a scope and sequence of content being taught, standards which drive teacher instruction, and a summative assessment system to validate learning.
2. Post-secondary Preparedness - Individual Plans of Study
 - a. USD 234 will establish a district-wide Individual Plan of Study (IPS) program to create a robust, individualized curriculum.
3. Hiring, Recruiting, and Retaining highly qualified staff
 - a. USD 234 is committed to recruiting, hiring, and retaining highly-qualified staff who meet the needs of USD 234 students.
4. Communication
 - a. USD 234 will improve internal and external communication to ensure students, staff, parents, and community are aware of current district initiatives, programs, and opportunities that support student personal growth and academic achievement.

Board Members

President	David Stewart
Vice-President	James Wood
Member	Jamie Armstrong
Member	Gary Billionis
Member	Janet Braun
Member	Michelle Hudiburg
Member	Jordan Witt

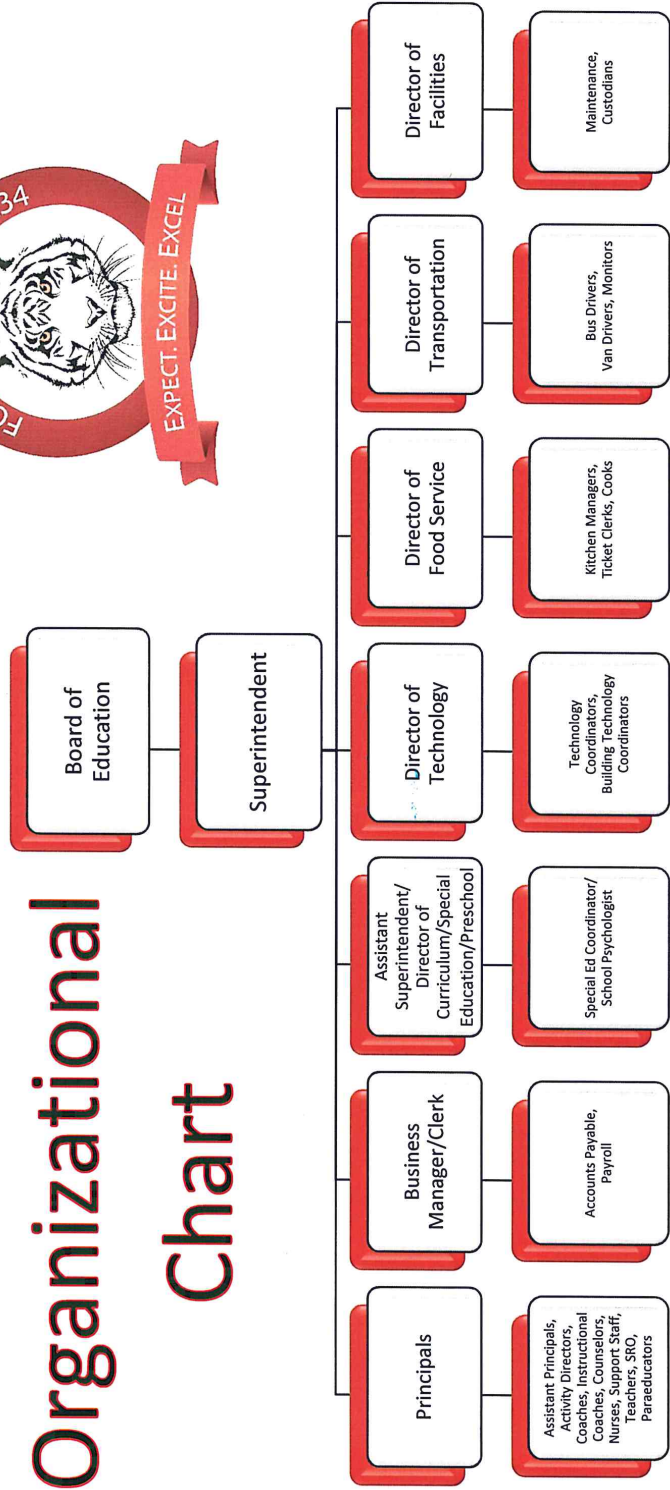
Key Staff

Superintendent:	Ted Hessong	
Assistant Superintendent:	Nicki Traul	
Principals:	Amber Toth David Brown Stephanie Witt Joy McGhee Andrea Scott	Fort Scott High School Fort Scott Middle School Eugene Ware Elementary Winfield Scott Elementary Fort Scott Preschool Center
Assistant Principals:	Dr. Robyn Kelso Matthew Harris	Fort Scott High School Fort Scott Middle School
Activity Directors:	Jeff DeLaTorre Dakota Hall	Fort Scott High School Fort Scott Middle School
Business Manager/Board Clerk:	Gina Shelton	
Director of Facilities:	Daniel Koppa	
Director of Food Service:	Robin Button	
IT Coordinator:	Bryce Daly	
Special Education Coordinator:	Ricky Scholes Jr.	
Director of Technology:	Stephen Mitchell	
Director of Transportation:	Joseph Allen	

USD 234

Organizational

Chart



The District's Accomplishments and Challenges

Accomplishments:

1. Implemented a 40.1-million-dollar bond project that updated our facilities and technology to assist with student learning.
2. Expanded our preschool program as an early education initiative.
3. Began partnership with Community in Schools at the high school.
4. Continued a mentor program at the high school matching students with patrons in the community to provide additional support.
5. Began providing mental health services through a local mental health provider.
6. Implemented Emergency Operations Plan.
7. Updated ELA and Math through resource adoption
8. Began partnership with the Community Health Clinic to provide nursing services
9. Updated to an online application process
10. Purchased new transportation building
11. Purchased three new school buses
12. Began a redesign of our special education department
13. Adopted random drug testing at middle school and high school beginning with the 2019-2020 school year
14. Streamlined maintenance services throughout the district

Challenges:

1. High poverty rates and generational poverty
2. Closing of local hospital
3. Local politics impeding progress
4. Difficulty recruiting highly qualified teachers and special services personnel

Supplemental Information for the Following Tables

1. Summary of Total Expenditures by Function (All Funds)
2. Summary of General Fund Expenditures by Function
3. Summary of Supplemental General Fund Expenditures by Function
4. Summary of General and Supplemental General Fund Expenditures by Function
5. Summary of Special Education Fund by Function
6. Instruction Expenditures (1000)
7. Student Support Expenditures (2100)
8. Instructional Support Expenditures (2200)
9. General Administration Expenditures (2300)
10. School Administration Expenditures (2400)
11. Central Services Expenditures (2500)
12. Operations and Maintenance Expenditures (2600)
13. Transportation Expenditures (2700)
14. Other Support Services Expenditures (2900)
15. Food Service Expenditures (3100)
16. Community Services Operations (3300)
17. Capital Improvements (4000)
18. Debt Services (5100)
19. Miscellaneous Information – Transfers (5200)
20. Miscellaneous Information Unencumbered Cash Balance by Fund
21. Reserve Funds Unencumbered Cash Balance
22. Other Information – Enrollment Information
23. Miscellaneous Information Mill Rates by Fund
24. Other Information – Assessed Valuation and Bonded Indebtedness

Note: FTE is the audited enrollment 9/20 and 2/20 (if applicable) and estimated for the budget year, which includes 4yr old at-risk and virtual enrollment. Enrollment does not include non-funded preschool. Beginning 2017-18, full-day Kindergarten is 1.0 FTE. This information is used for calculating Amount Per Pupil for Sumexpen.xlsx and Budget At A Glance (BAG).

KSDE Website Information Available

K-12 Statistics (Building, District or State Totals) website below:

<http://svapp15586.ksde.org/k12/k12.aspx>

- Attendance / Enrollment Reports
- Staff Reports
- Graduates / Dropouts Reports
- Crime / Violence Reports

School Finance Reports and Publications website below:

<http://www.ksde.org/Agency/Fiscal-and-Administrative-Services/School-Finance/Reports-and-Publications>

- Assessed Valuation
- Cash Balances
- Headcount Enrollment
- Mill Levies
- Personnel (Certified/Non-Certified)
- Salary Reports

Kansas Building Report Card website below:

<http://ksreportcard.ksde.org/>

- Attendance Rate
- Graduation Rate
- Dropout Rate
- School Violence
- Assessments
 - Reading
 - Mathematics
 - Writing
- Graduates Passing Adv. Science Courses
- Graduates Passing Adv. Math Courses